

# SHOCKALERT<sup>PRO</sup>

**DETECTS & LOCATES  
VOLTAGE IN WATER**

## WHAT IS ELECTRIC SHOCK DROWNING (ESD)?

Water can become electrified at any time. Pools and docks are surrounded by lights, pumps, boat lifts, etc. Faulty wiring, failed GFCI's, or stray voltage can introduce electricity to the water where your family swims. When this low level AC current passes through the body with enough force to cause paralysis, **THIS CAN RESULT IN DROWNING – ELECTRIC SHOCK DROWNING**

**PREVENT ELECTRIC SHOCK DROWNING BY TESTING THE WATER  
WITH SHOCK ALERT**



## HOW DOES SHOCK ALERT WORK?

Shock Alert is a device that uses three (3) probes to detect voltage gradients in water and warn you and your family of potentially dangerous electricity.

**NO VOLTAGE DETECTED**



### FLASHING WARNING INDICATORS

If there is voltage present in the water, the Shock Alert will flash red LED warning lights.

**VOLTAGE DETECTED**



### AUDIBLE WARNING INDICATORS

The Shock Alert is equipped with audible warning indicators that beep loudly when electricity is detected in the water.



### INCREASING WARNING INDICATORS

As you move closer to the voltage source, the intensity of visible and audible warnings will increase.

## WHERE SHOULD SHOCK ALERT BE USED?

### POOLS



### DOCKS



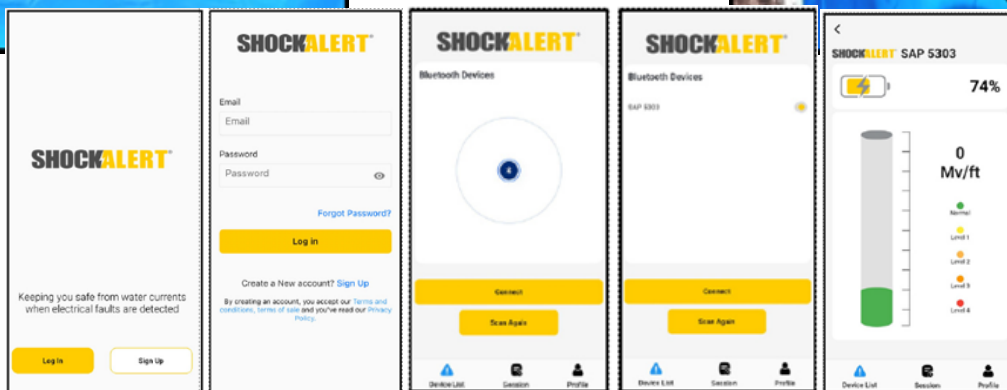
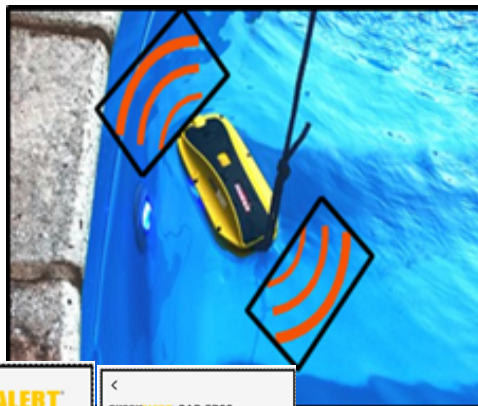
### FOUNTAINS



For more information please call 1-844-NO-SHOCK or visit [www.shockalert.com](http://www.shockalert.com)



**DETECTS & LOCATES VOLTAGE IN WATER. CAN BE USED WITH OR WITHOUT THE APP.**



## PARTS LIST:

- Shock Alert Pro Device (1)
- 12' Rope Tether (1)
- 3ft USB Charging Cord (1)

## DEVICE SPECIFICATIONS

SKU #	42600
Size (HxWxL)	3 in x 7.5 in x 3 5/8 in (13.3 cm x 21.6 cm x 24 cm)
Weight	.8 lbs (364 grams)
Battery Type	Li Ion 3.6V
Min Operating System Requirements	iOS Version 12.0, Android Version 5.0



## OPERATION INSTRUCTIONS

**Do not operate device prior to reading complete operation instructions located inside the Owner's Manual.**

This device is designed to detect electricity present in water by measuring the voltage gradients using the three probes located on the bottom of the device. It is NOT designed to and WILL NOT absorb electrical voltage from the water. WARNING: Use extreme caution and avoid contact with water until Shock Alert shows no voltage detected.

1. Charge the battery using the charging cord provided. The unit is fully charged when the full LED panel is flashing.
2. Power on all sources of electricity in and around the pool or dock prior to using Shock Alert PRO.
3. Attach 12' tether to the Shock Alert device.
4. Power on the device and run through Self-Test mode.
5. Using the rope tether, lower device into water.
6. Device will flash green if there is no voltage present. Device will flash red and beep if voltage is present. As you move closer to the voltage source, the flashing and beeping will increase.
7. Using the rope tether, pull the Shock Alert around the perimeter of the pool, dock, fountain, etc.

REV A 08/25



U.S. PAT. #9,285,396, #8,643,360, #8,686,713 and other patents pending.

**1-844-NO-SHOCK**  
**www.shockalert.com**  
 SHOCK ALERT, LLC.  
 2977 Hwy K, #286, O'FALLON, MO 63368